

Photometric Report

ERA 700 IP – Medium

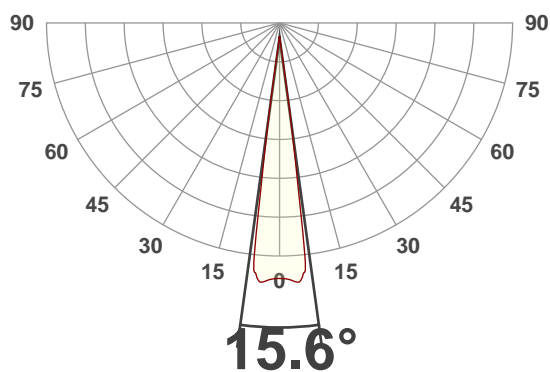
MARTIN PROFESSIONAL R&D OPTICAL LABORATORY

GENERAL SPECIFICATIONS

Total Fixture Output:	26000 lm
Light Engine Output:	46000 lm
Efficacy:	28 Lumen/Watt
Lens Option:	N/A
Zoomrange:	5.4-44 °
CRI:	70
CQS:	68
TM-30 Rf:	71
TM-30 Rg:	94
TLCI:	46
Color Temperature:	6500 k



MEASUREMENT

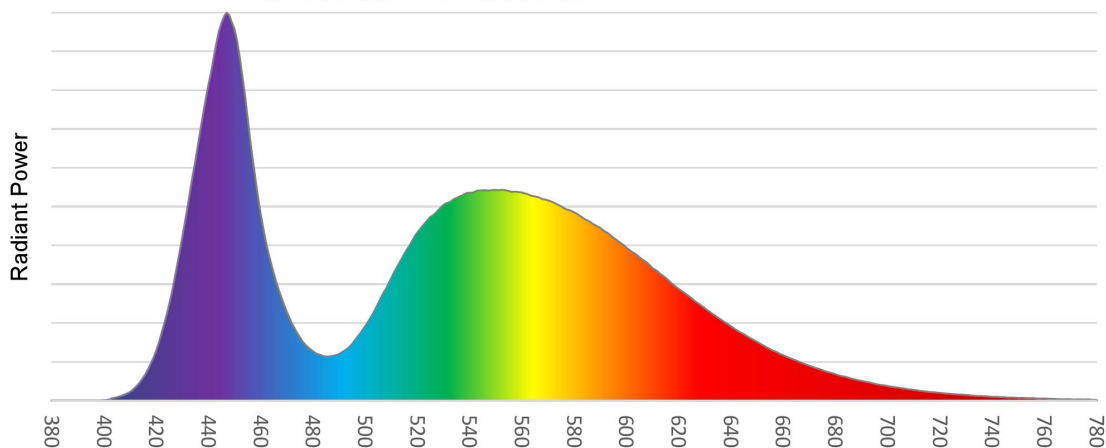


Catalog Number:	15600768015
Measured Output:	25035 lm
Measured Peak:	417437 cd
Consumed Power:	874 W
Efficacy:	28.5 Lm/Watt

Beam Angle (50%):	15.6 °
Field Angle (10%):	18 °
Cutoff Angle (3%):	19.5 °

Measurement Condition:	
Ambient Temperature:	25 ° +/- 5 ° C
AC Supply:	230V/50Hz
Fan Mode:	Regulated
Fixture Warm-up Time:	30 minutes

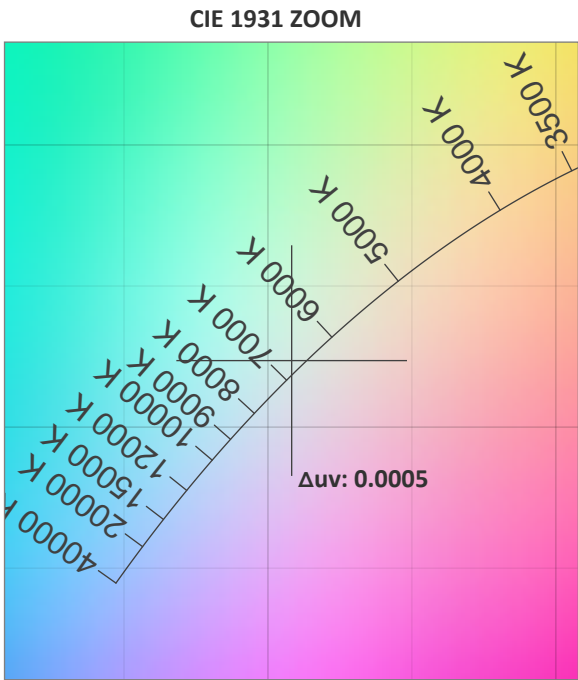
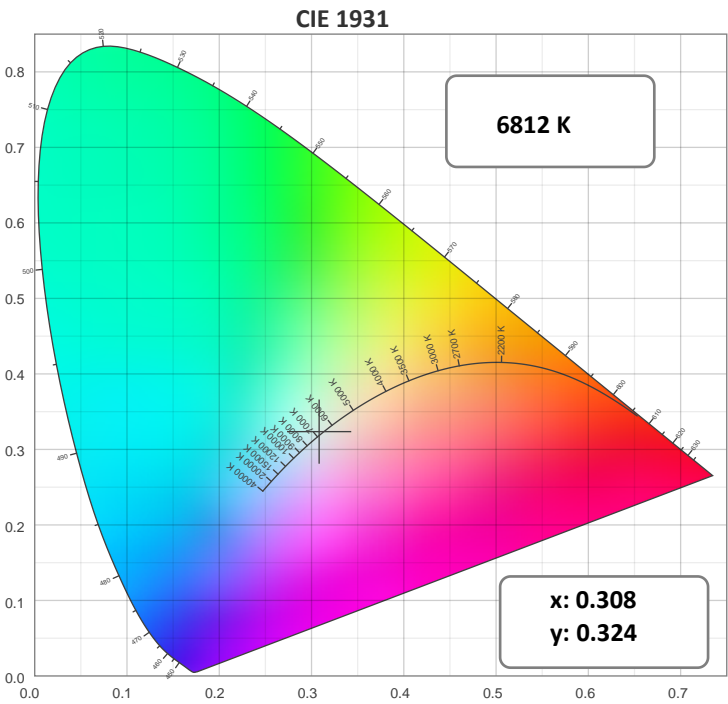
SPECTRAL DISTRIBUTION



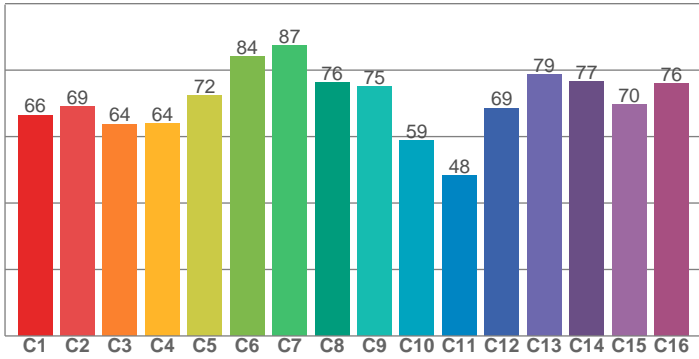
Photometric Report

ERA 700 IP – Medium

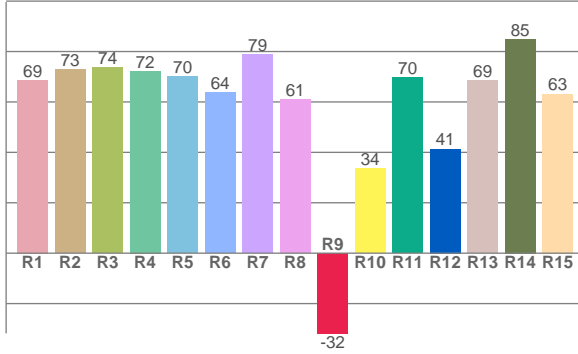
CHROMATICITY



TM30: 70.7



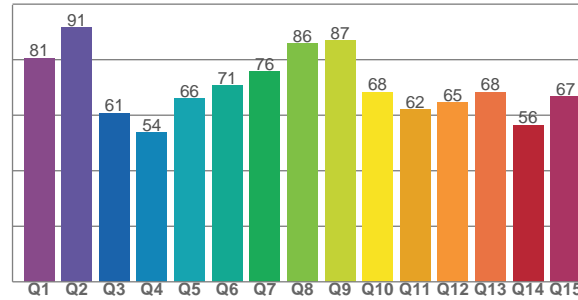
CRI: 70.1 (R1-R8)



COLOR PARAMETERS

Color Temperature	Color Rendering Index	Red Component	Color Fidelity	Color Gamut
CCT	CRI	CRI R9	TM30 Rf	TM30 Rg
6812 K	70.1	-31.8	70.7	94.0

CQS: 68.5



Television Lighting Consistency Index	Color Quality Scale	Color Coordinate CIE 1931	Color Coordinate CIE 1931	Color Coordinate CIE 1964	Color Coordinate CIE 1964	Color Deviation from Black Body
TLCI	CQS	x	y	u	v	Δuv
46	68.5	0.308	0.324	0.197	0.310	0.0005

Photometric Report

ERA 700 IP – Medium

TM30

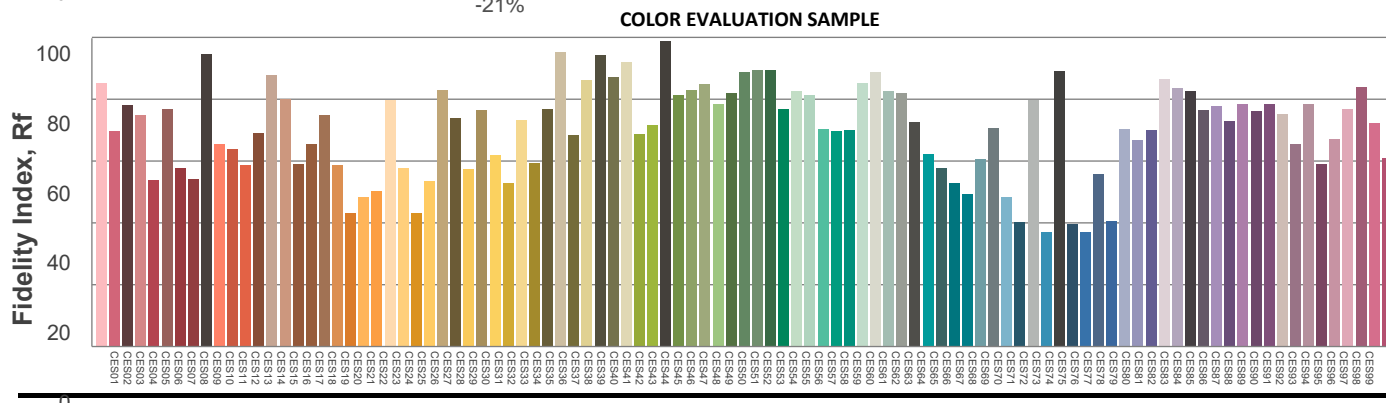
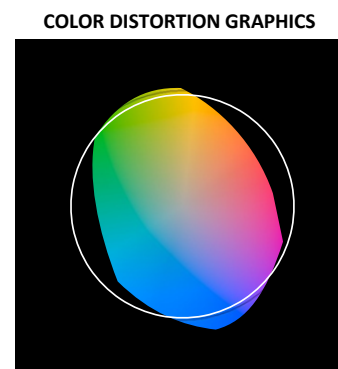
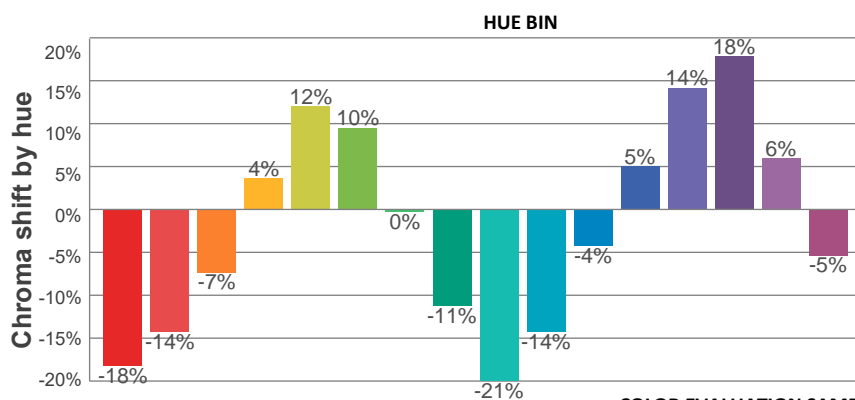
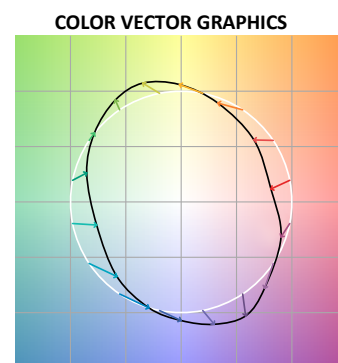
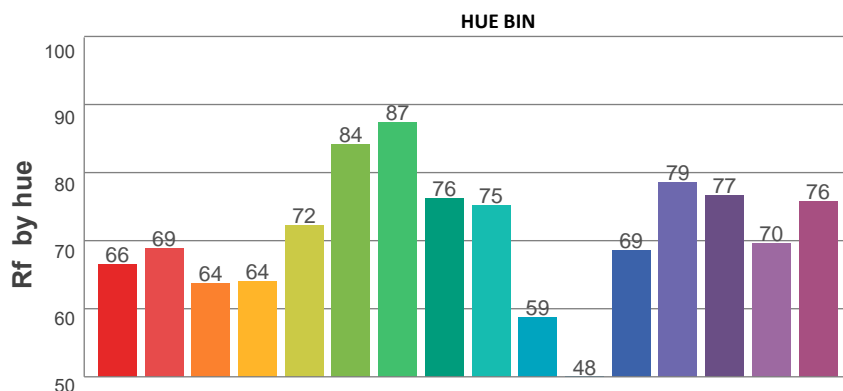
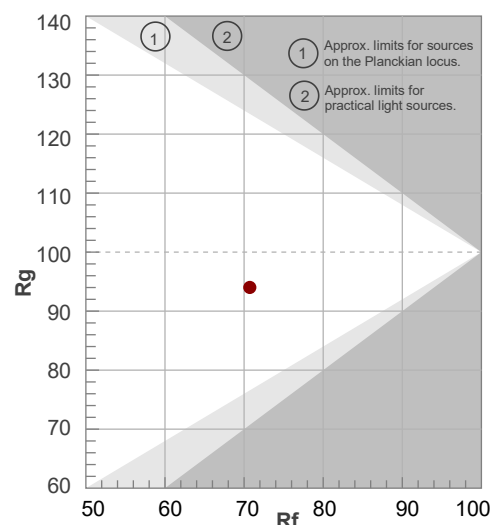
Rf 70.7

Fidelity index Rf

Rg 94.0

Gamut index Rg

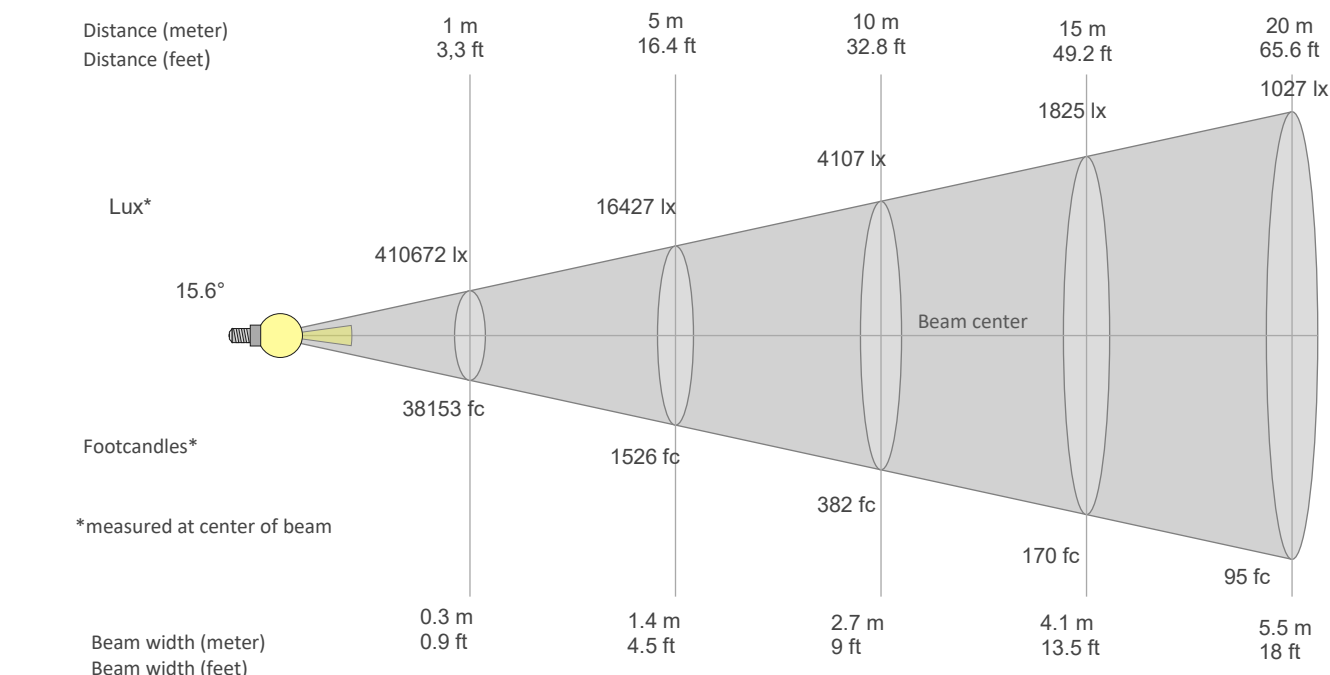
Hue Bin	R _f	Graphic shifts (%)	
		Chroma	Hue
1	66	-18%	-4%
2	69	-14%	10%
3	64	-7%	22%
4	64	4%	22%
5	72	12%	13%
6	84	10%	-2%
7	87	0%	-8%
8	76	-11%	-9%
9	75	-21%	6%
10	59	-14%	24%
11	48	-4%	29%
12	69	5%	21%
13	79	14%	8%
14	77	18%	-9%
15	70	6%	-23%
16	76	-5%	-13%



Photometric Report

ERA 700 IP – Medium

BEAM DETAILS

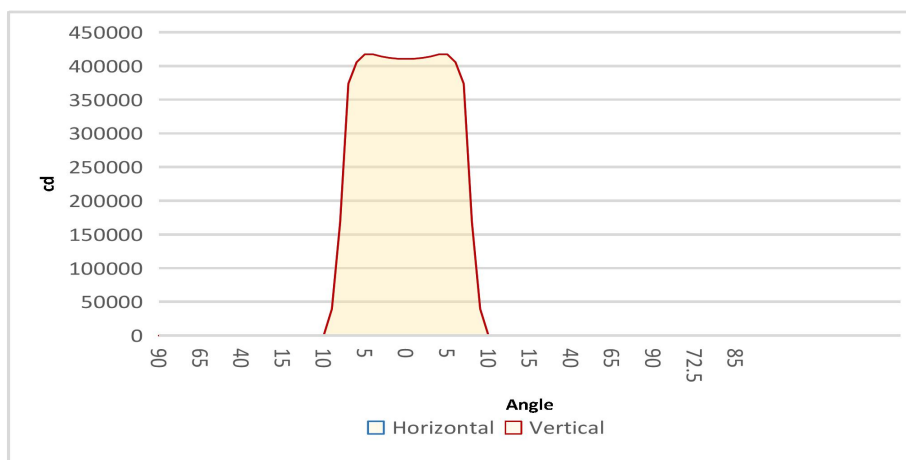


Beam width: = 0.3 * distance
Illuminance: = 410672 / (distance²)

distance in [m] for illuminance in [lux] distance in [ft] for illuminance in [fc]

BEAM ILLUMINANCE FROM 1-20M

1m	2m	3m	4m	5m	6m	7m	8m	9m	10m	11m	12m	13m	14m	15m	16m	17m	18m	19m	20m
3.3ft	6.6ft	9.8ft	13.1ft	16.4ft	19.7ft	23ft	26.2ft	29.5ft	32.8ft	36.1ft	39.4ft	42.7ft	45.9ft	49.2ft	52.5ft	55.8ft	59.1ft	62.3ft	65.6ft
410672lx	102668lx	45630lx	25667lx	16427lx	11408lx	8381lx	6417lx	5070lx	4107lx	3394lx	2852lx	2430lx	2095lx	1825lx	1604lx	1421lx	1268lx	1138lx	1027lx
38152.7fc	9538.2fc	4239.2fc	2384.5fc	1526.1fc	1059.8fc	778.6fc	596.1fc	471fc	381.5fc	315.3fc	264.9fc	225.8fc	194.7fc	169.6fc	149fc	132fc	117.8fc	105.7fc	95.4fc



BEAM ANGLE 50%	FIELD ANGLE 10%	CUTOFF ANGLE 3%
15.6°	18°	19.5°